

若松駅前土地区画整理事業
確定図

4/14

(1) $9.15(4.75+4.25) = 82.35$
 (2) $14.60 \times 6.00 = 87.60$
 (3) $18.35(9.10+4.10) = 242.25$
 計 412.17
 =降 206.08

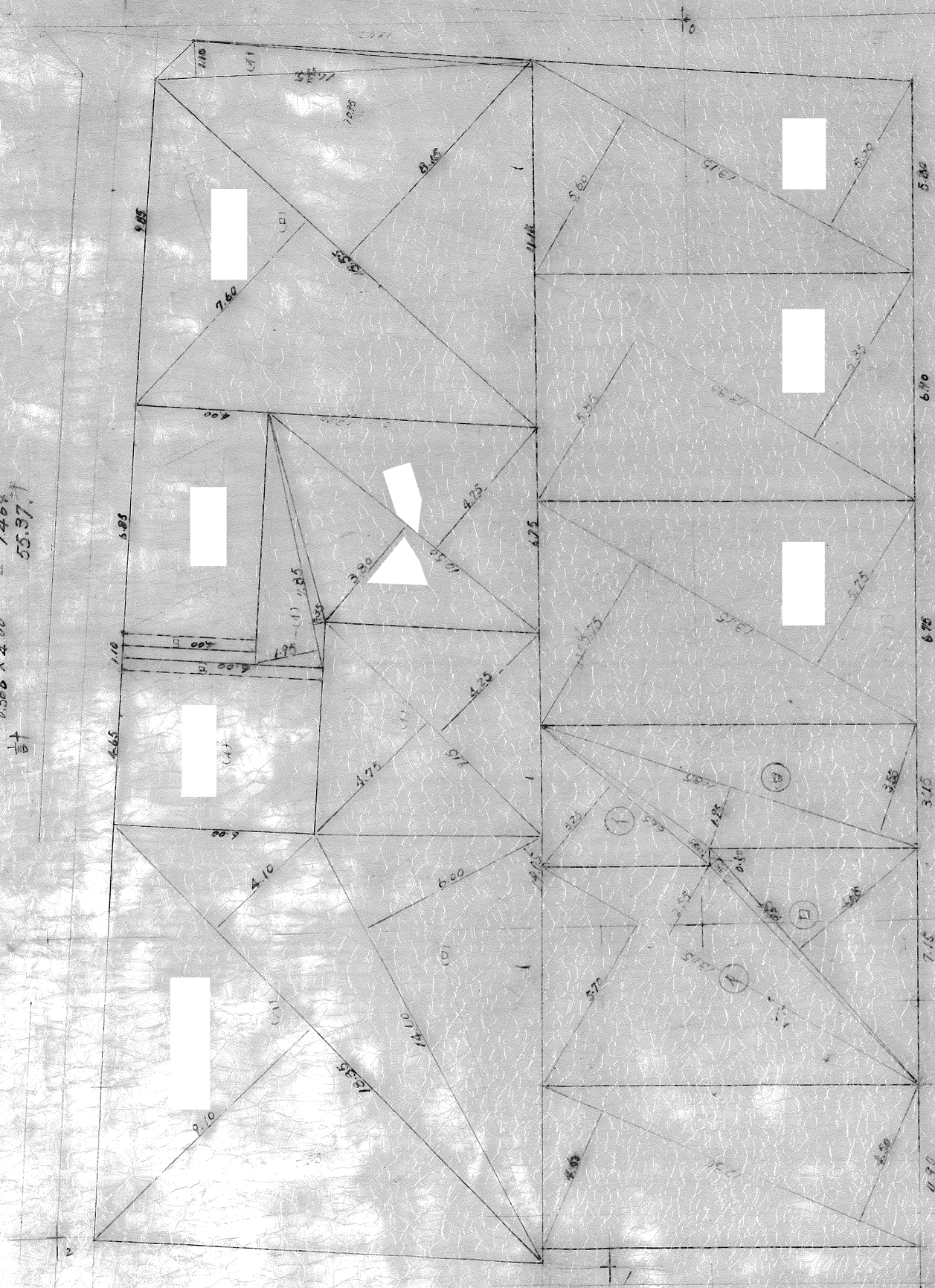
(1) $10.85 \times 4.00 = 27.40$
 (2) $10.366 \times 4.00 = 14.66$
 計 288.67

(1) $4.65 \times 6.00 = 27.90$
 (2) $10.366 \times 6.00 = 2.196$
 計 30.096

(1) $7.85(1.95+0.55) = 18.055$
 (2) $10.50(3.80+4.75) = 89.775$
 計 107.83
 =降 53.915
 計 146.64
 55.97

(1) $1.35 \times 1.10 = 12.435$
 (2) $15.55(7.60+2.15) = 244.915$
 計 257.35
 128.68

総地積 449.09



(1) $12.30(4.60+4.50) = 110.70$
 計 110.70
 =降 55.35

(1) $6.68(3.55+0.55) = 25.96$
 (2) $11.85(1.95+3.55) = 65.175$
 計 89.115
 =降 44.55

(1) $13.05(5.70+2.55) = 107.625$
 (2) $9.45(1.35+4.65) = 47.25$
 計 154.875
 =降 77.4375

(1) $13.30(5.55+5.55) = 155.61$
 (2) $13.15(5.60+5.00) = 139.39$
 計 295.00